

NEW



more than
75 years
of quality
in Europe

precision measuring instruments
mechanical - optical - electronical

New products

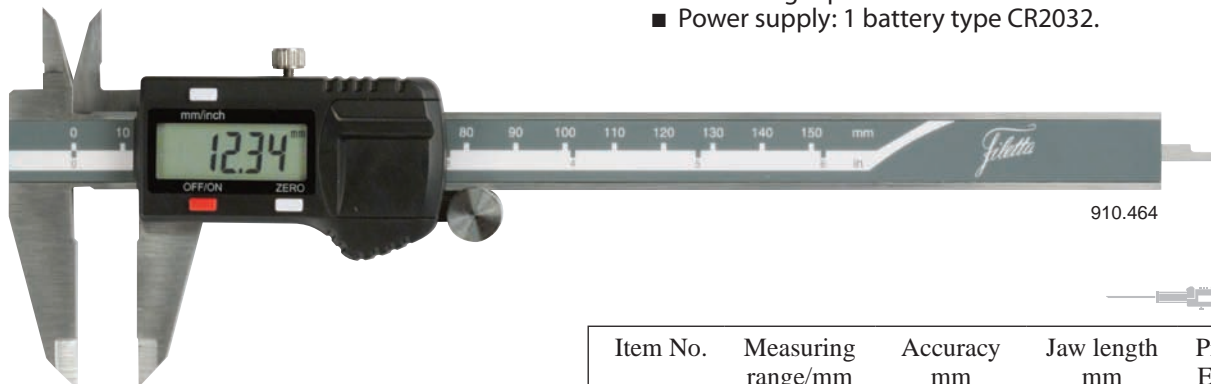
Revision date: March 2024



NEW

Digital calipers

- Measuring range: 0 - 300 mm.
- Resolution: 0.01 mm.
- mm/inch conversion.
- On/off switch.
- Automatic switch-off.
- Reset.
- Thumb wheel/locking screw/flat depth rod.
- Delivery in a plastic case with a manufacturer measuring report.
- Power supply: 1 battery type CR2032.



910.464

Filetta

NEW

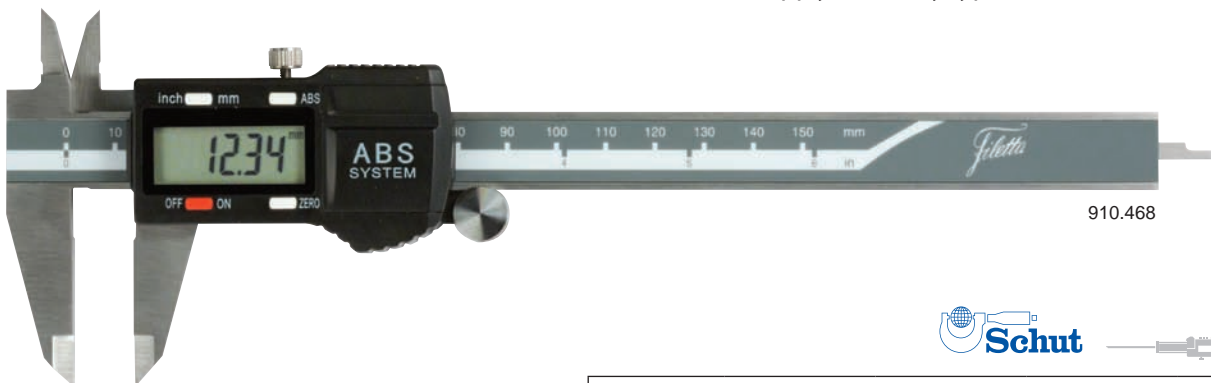
PRICE

Item No.	Measuring range/mm	Accuracy mm	Jaw length mm	Price EUR
910.464	0 - 150	0.03	40	30.30
910.465	0 - 200	0.03	50	43.00
910.466	0 - 300	0.03	60	61.00
Option:				
495.157	Spare battery type CR2032			0.50

Absolute digital calipers

Calipers with an absolute measuring system for easy incremental and absolute conversion.

- Measuring range: 0 - 300 mm.
- Resolution: 0.01 mm.
- mm/inch conversion.
- ABS/INC switchable.
- On/off switch.
- Automatic switch-off.
- Reset.
- Thumb wheel/locking screw/flat depth rod.
- Delivery in a plastic case with a manufacturer measuring report.
- Power supply: 1 battery type CR2032.



910.468

Filetta

NEW

 Schut

PRICE

Item No.	Measuring range/mm	Accuracy mm	Jaw length mm	Price EUR
910.468	0 - 150	0.03	40	38.40
910.469	0 - 200	0.03	50	53.00
910.470	0 - 300	0.03	60	74.00
Option:				
495.157	Spare battery type CR2032			0.50

NEW

Digital calipers with thin measuring jaws

Digital calipers with extra thin measuring jaws for measuring inside small grooves.

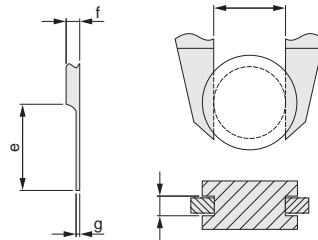
- Measuring range: 0 - 300 mm.
- Resolution: 0.01 mm.
- mm/inch conversion.
- On/off switch.
- Reset.
- Large LCD display.
- Locking screw/flat depth rod.
- Delivery in a case.
- Power supply: 1 battery type V357.



910.274

NEW

PRICE



Filetta

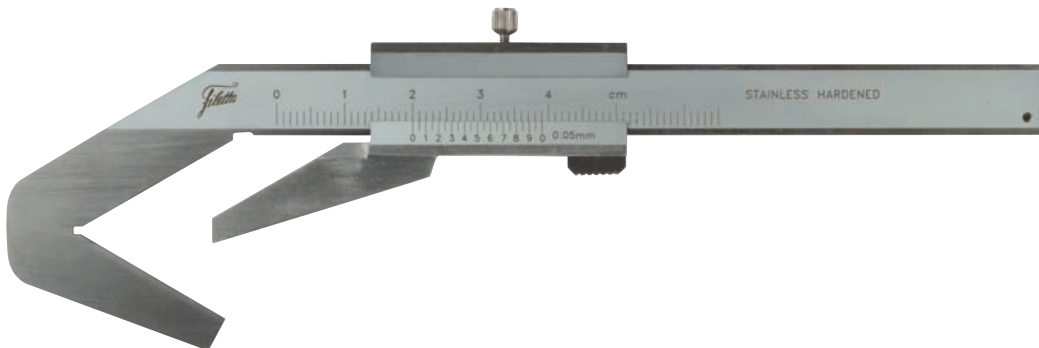
Item No.	Measuring range/mm	Accuracy mm	e mm	f mm	g mm	Price EUR
910.274	0 - 150	±0.06	20	3.6	0.75	98.00
910.275	0 - 200	±0.10	20	3.6	0.75	126.00
910.276	0 - 300	±0.10	20	3.8	1	169.00
Option: 836.535 Spare battery type V357						0.80

Caliper with prismatic anvil

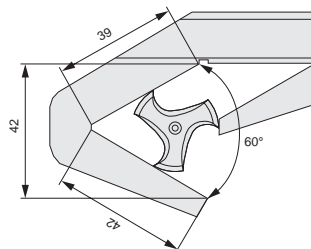
Caliper with prismatic anvil for measuring objects with an uneven number of grooves like cutters, reamers and drills. The angle of the prism aperture is designed for workpieces having a number of 3 flutes.

- Measuring range: 4 - 40 mm.
- Locking screw.
- Graduation: 0.05 mm.
- Accuracy: ± 0.05 mm.

NEW



PRICE



Filetta

Item No.	For work-pieces with	Measuring range/mm	Price EUR
Analog 910.431	3 flutes	4 - 40	97.00



NEW

Brass caliper

Brass caliper with a vernier.

- Measuring range: 0 - 100 mm.
- Vernier: 0.1 mm, parallax-free.
- Dovetail guide.
- Antimagnetic.

NEW



841.629

Filetta



841.628

Item No.	Measuring range/mm	Jaw length mm	Price EUR
841.628	0 - 80	20	5.20
841.629	0 - 100	20	5.80

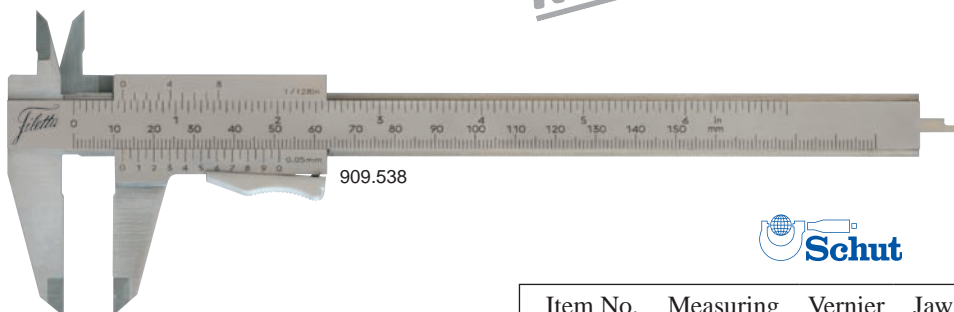
Calipers with vernier - brass or parallax-free

- Measuring range: 0 - 150 mm.
- Vernier: 0.05 or 0.02 mm.
- Hardened stainless steel calipers with a matt chrome-plated beam (only 909.538).
- Raised sliders (except 909.538).
- Accuracy: ± 0.03 mm.
- Monoblock.
- Locking screw or spring release.
- Flat depth rod (except 909.423 / 424).
- Thread table on the back side.
- Delivery in a sleeve.



910.423

NEW



909.538

Filetta



PRICE

Item No.	Measuring range/mm	Vernier mm	Jaw length mm	Price EUR
Brass calipers (without depth rod):				
910.424	0 - 150	0.05	40	114.00
910.423	0 - 150	0.02	40	116.00
Parallax-free (spring release):				
909.538	0 - 150	0.05	40	55.00

NEW

Dial bore gauge for through bores

Dial bore gauge consisting of a grip (clamping shaft \varnothing 8 mm), with a two point split contact point with a needle.

- Measuring range: 3 - 18 mm.
- Measuring elements: hardened steel.
- Measuring needles: hardened steel.
- Including standard dial indicator 0 - 3 mm / 0.01 mm.
- Constant measuring force as a result of a built-in spring, thus eliminating user influence.
- Delivery in a plastic case.

NEW

PRICE

Item No.	Measuring range/mm	Measuring depth/mm	Number of inserts	Price EUR
910.326	3 - 4	20	4	384.00
910.327	4 - 6	30	4	308.00
910.328	6 - 10	40	4	210.00
910.329	10 - 18	130	8	224.00

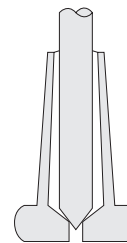
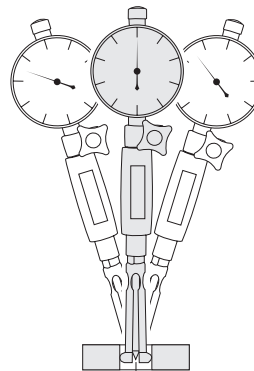


910.329



910.327

Filetta



Optional dial indicators

Item No.	Measuring range/mm	Graduation mm	Accuracy mm	Price EUR
Analog:				
907.933 ¹	0 - 10	0.01	—	19.00
Digital (with determination of the reversal point):				
910.004 ¹	0 - 12.7	0.001	± 0.004	163.00
909.250 ¹	0 - 12.5	0.002	± 0.015	112.00
909.251 ¹	0 - 12.5	0.0005	± 0.006	210.00
910.340 ²	0 - 15	0.0005	± 0.002	310.00
Option:				
852.446	Probe extension 10 mm			5.10

¹ Extension 10 mm 852.446 required (only for 910.326 and 910.327).

² Only suitable for 910.326 and 910.327.



910.004



910.340



NEW

Digital dial indicators with high resolution

Digital dial indicators with digital and digital-analog read-out and a high resolution of 0.0005 mm.

- Measuring range: 0 - 50.8 mm.
- Resolution: 0.0005.
- mm/inch conversion.
- ABS/INC switchable.
- On/off switch.
- USB-C data output: for data transfer to PC (e.g. Excel, Word), operating system Windows and other.
- Multifunctional functions: automatic switch-off, adjustable tolerance limits, reversible measuring direction, hold-function, min/max-function.
- Reset/preset.
- Clamping stem: $\varnothing 8$ mm.
- Dial diameter: 62 mm.
- Dial 270° rotatable.
- With determination of the reversal point.
- Protection: IP54.
- Delivery with USB-C and a manufacturer measuring report; excluding USB charger.
- Power supply: rechargeable battery.

NEW

PRICE

Item No.	Measuring range/mm	Resolution mm	Accuracy mm	Measuring force/N	Price EUR
910.340	0 - 15	0.0005	± 0.002	1.5	310.00
911.184	0 - 25.4	0.0005	± 0.002	1.5	302.00
911.185	0 - 50.8	0.0005	± 0.004	1.5	341.00



910.340

Filetta

Center-accessory

Small magnetic dial indicator stand which, in combination with a lever, could also be used as center-accessory to align bores in workpieces. For use in combination with a machine center.

- Permanent magnet $\varnothing 30$ mm.
- Universal pivot with dovetail clamp.
- Fine adjustment.
- Cylindrical support $\varnothing 10$ mm for insert in the collet chuck of a machine center.

NEW



910.341

PRICE

Item No.	Description	Price EUR
910.341	Center-accessory	22.90
960.490	Cylindrical support	21.60



960.490

Filetta



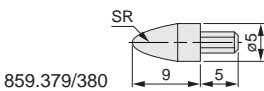
NEW

Peacock inserts for dial indicators

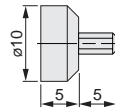
- Screw thread: M2.5.



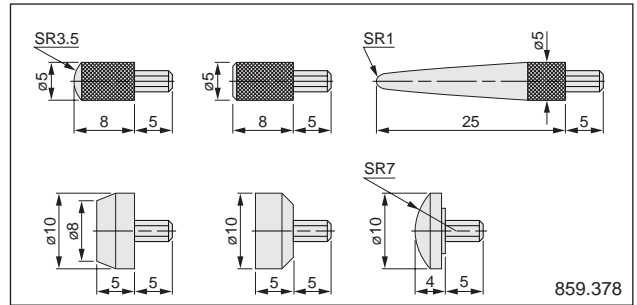
859.378



859.379/380



859.381

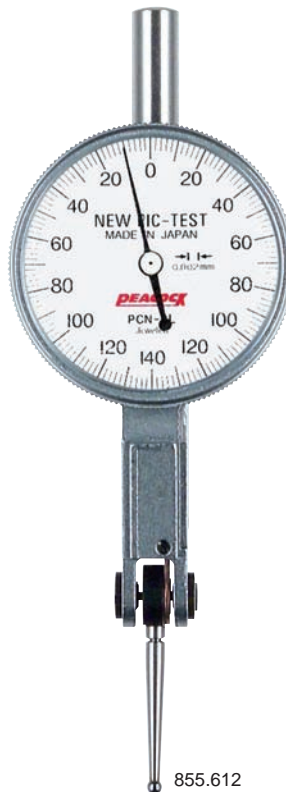


859.378

Item No.	Description	Price EUR
859.379	Bakelite probe	19.60
859.380	Teflon probe	19.60
859.381	Teflon probe	24.50
859.378	Steel probe set	74.00

Peacock lever-type dial test indicator

- Measuring range: up to 0.28 mm.
- Graduation: 0.002 mm.
- With dovetail joint and clamping stem $\varnothing 6$ mm.
- Measuring force: < 0.3 N.
- Dial diameter: $\varnothing 35$ mm.
- Tungsten carbide stylus tip: $\varnothing 2$ mm.
- Insert thread: M1.7.
- Delivery in a plastic case with a manufacturer measuring report.



855.612

NEW

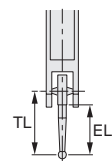
Inserts

Item No.	Ball \varnothing /mm	Price EUR
For 855.612:		
859.571 ¹	2	11.10
859.572 ¹	1	15.40
859.573 ¹	0.8	15.40
859.574 ¹	0.5	56.00
859.575 ²	2	45.00

¹ Tungsten carbide.

² Ruby.

Item No.	Measuring range/mm	Max. hysteresis mm	Accuracy mm	Graduation mm	Scale numbering	Insert	Total insert length (TL/EL)/mm	Price EUR
Horizontal:								
855.612	0.28	0.004	± 0.005	0.002	0-140-0	859.571	23.47/19.61	136.00





NEW

TESA P-Line lever-type dial test indicators

The P-Line range reflects all the quality and high precision of the well-known COMPAC brand.

- Measuring range: up to 3 mm.
- Graduation: 0.01, 0.002 or 0.001 mm.
- With dovetail joint.
- Tungsten carbide stylus tip.
- Insert thread: M1.6.
- ISO 9493.
- Delivery in a plastic case with an inspection report and two clamping stems (783.698 and 782.867).

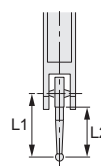
Inserts

Item No.	Ball ø/mm	Insert length (L1/L2)/mm	Price EUR
783.329 ¹	0.8	18/14.26	29.00
783.120 ¹	2	18/14.26	28.00
783.699 ¹	3	18/14.26	30.00
783.036 ¹	0.8	36/32.26	31.00
782.488 ¹	2	36/32.26	30.00
783.419 ¹	3	36/32.26	30.00
783.596 ²	2	18/14.26	94.00
783.700 ²	2	36/32.26	94.00

¹ Tungsten carbide.

² Ruby.

NEW



Item No.	Measuring range/mm	Accuracy mm	Graduation mm	Measuring force/N	Dial ø/mm	Scale numbering	Insert length](L1/L2)/mm	Price EUR
P-Line, horizontal:								
783.422	1.5	0.010	0.01	0.35	27	0-25-50	18/14.26	504.00
782.414	1.5	0.010	0.01	0.35	40	0-25-50	18/14.26	509.00
782.370	3	0.020	0.01	0.2	27	0-50-100	36/32.26	516.00
782.347	3	0.020	0.01	0.2	40	0-50-100	36/32.26	521.00
783.321	0.6	0.010	0.002	0.3	27	0-5-10	18/14.26	529.00
782.994	0.6	0.010	0.002	0.3	40	0-5-10	18/14.26	534.00
783.165	1.2	0.020	0.002	0.2	40	0-10-20	36/32.26	539.00
782.998	0.6	0.010	0.001	0.3	40	0-5-10	18/14.26	541.00
P-Line, lateral:								
783.425	3	0.020	0.01	0.2	40	0-50-100	36/32.26	521.00
P-Line, perpendicular:								
782.999	3	0.020	0.01	0.2	40	0-50-100	36/32.26	521.00

NEW

V-blocks in pairs set

- Accuracy: ± 0.005 mm.
- Parallelism measuring faces: ± 5 μm .
- Hardened (V-blocks: HRC 52-57, W-blocks: HRC 22-28).
- Ground in matched pairs.
- V-groove: 90° .
- Delivery incl. Clamps and ledge.
- Delivery in a plastic carrying case.

Filetta

NEW

Item No.	Dimensions <i>l x w x h</i> /mm	Capacity \varnothing /mm	Price EUR
910.459	70 x 45 x 40	4-38	225.00



NEW

Mini precision clamping tools

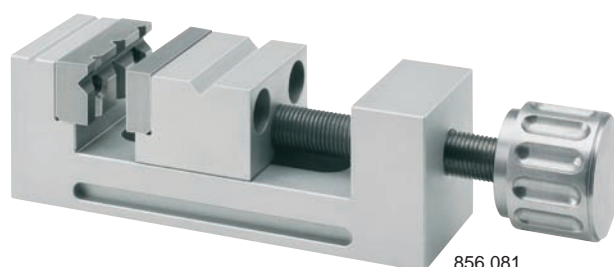
Miniature clamping tools for clamping of small products. Very well suited for measuring for example with roughness testers, microscopes or measuring machines.

Mini precision vises

- Accuracy (parallelism, flatness and squareness): 0.02 mm.
- 856.081: brass, matt chrome-plated; 856.082 and 856.083: aluminum, matt anodized.
- Standard supplied with 2 pairs of jaws (hardened stainless steel and plastic): 1 side with a ground horizontal and vertical prism and 1 flat side.
- 856.081 and 856.082: on the bottom-side provided with 2 x M4 threaded bores with center distances 42 and 62.5 mm; 856.083: on the bottom-side provided with 2 x M6 threaded bores with center distance approx. 83 mm.

Clamp jaw sets

Sets consisting of 1 pair plastic jaws, 1 pair with stepped jaws and 1 jaw with a stopper in the horizontal prism.



856.081

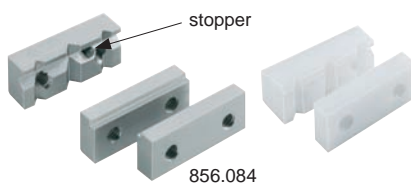


Item No.	Jaw opening mm	Jaw width mm	Jaw depth mm	Length mm	Weight kg	Price EUR
856.081	14	15	8	50	0.075	104.00
856.082	23	25	15	75	0.16	139.00
856.083	32	35	21	100	0.4	196.00



Options

Item No.	Description	Price EUR
Clamp jaw sets:		
856.084	For 856.081	42.00
856.085	For 856.082	57.00
856.086	For 856.083	85.00



856.084



Mini precision vises in a set

Mini precision vises in a set, consists of 856.081, 856.082 and 856.083 with matching clamp jaws.

- Delivery in a plastic carrying case.

NEW



Item No.	Description	Price EUR
856.175	Mini precision vises in a set	654.00

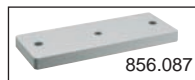
NEW

Stand for mini precision vises

Stand for use with mini precision vises in combination with base plates. The base plates can also be used with other stands. For these stands see dial indicator stands elsewhere in the catalog.

NEW

Item No.	Description	Price EUR
670.057	Stand for 856.081 and 856.082	129.00
Base plates:		
856.087	For 856.081	26.00
856.088	For 856.082	27.70
856.089	For 856.083	31.20



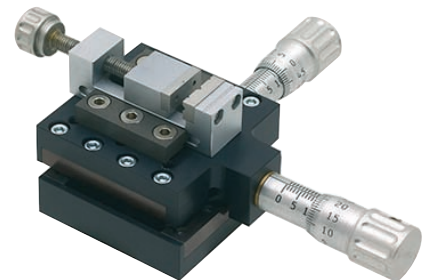
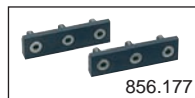
XY table for mini precision vises

XY table for accurate positioning underneath a microscope, for example.

- Dimensions: 50 x 50 x 27 mm.
- Range: 10 x 10 mm.
- Graduation micrometers: 0.01 mm.

NEW

Item No.	Description	Price EUR
856.176	XY table	952.00
856.177	Adapter for mini precision vise 856.081	79.00
856.178	Adapter for mini precision vise 856.082	100.00



Mini V-block

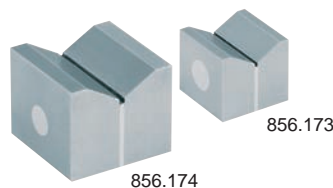
- Dimensions: 25 x 20 x 20 mm.
- Stainless steel construction.
- Delivery incl. clamp.

NEW

Item No.	Description	Price EUR
856.179	Mini V-block	127.00

Mini magnetic V-blocks

- Aluminum, hardened steel.

**NEW**

Item No.	Description	Price EUR
856.173	Mini V-block 20 x 20 x 17.5 mm	162.00
856.174	Mini V-block 30 x 30 x 25 mm	182.00



NEW

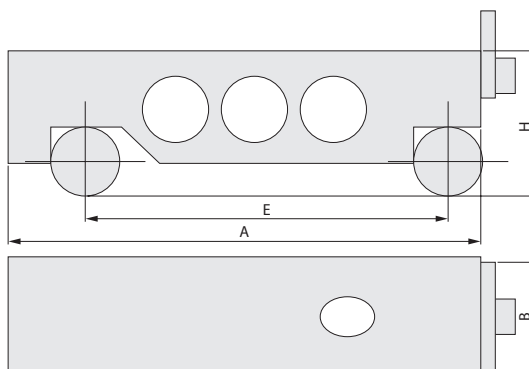
Sine bars

By means of a sine bar and with gauge blocks, a reference plane can be created at an angle of 0° to 60° with respect to the base. The base of the sine bar consists of two rollers with a center to center distance of 100 mm or 200 mm. In order to make a curve the gauge blocks are placed under one of the rollers.

- Straightness and parallelism: 5 µm.
- Surface roughness: Ra 0.8 µm.
- Delivery in a plastic case.



NEW



Item No.	A	B	H	E	Price EUR
910.374	130	30	40	100	142.00
910.375	230	30	40	200	251.00

Adjustable parallel set

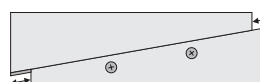
Set of 6 adjustable parallels. The parallels consist of 2 precisely ground tapered parts dovetailed together to ensure easy setting. These allow you to quickly clamp a workpiece in the correct position on a workbench, set a measuring instrument or check the internal dimensions of two parallel surfaces.



NEW



Parallel	Measuring range/mm	Measuring face length/mm
A	9.5-12.7	45
B	12.7-17.5	54
C	17.5-23.8	69
D	23.8-33.3	90
E	33.3-44.5	107
F	44.5-57.1	117



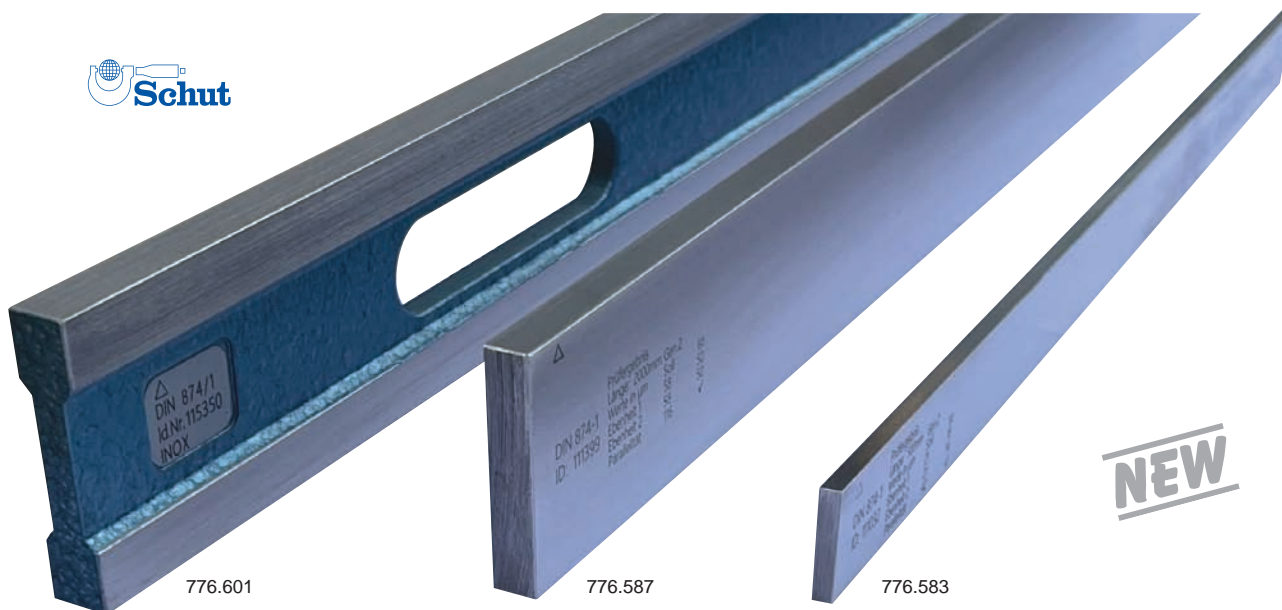
Item No.	Size/mm	Price EUR
910.400	9.5-57.1 mm	59.00

NEW

Bright steel and stainless steel straight edges DIN 874

High quality wooden cases for straight edges are optionally available.

- Length: 500 - 3000 mm.
- Class 0 and 1: rectangular cross-section up to length 1500 mm, from length 2000 mm I-shaped with two grip slots.
- Class 2: rectangular cross-section.
- Flatness of the measuring faces according DIN 874.
- Delivery with a manufacturer measuring report (the rectangular version has the manufacturer measuring report engraved on the straight edge).



Class	Dimensions/mm	Weight/kg	Item No.	Price EUR	Item No.	Price EUR
			Bright steel		Stainless steel	
DIN 874/0	500 x 50 x 10	2.0	776.569	76.00	776.590	132.00
	750 x 50 x 10	3.0	776.570	107.00	776.591	198.00
	1000 x 60 x 12	5.7	776.571	189.00	776.592	321.00
	1500 x 70 x 15	12.4	776.572	350.00	776.593	586.00
	2000 x 80 x 15	13.0	776.573 ^{1,2}	643.00	776.594 ^{1,2}	1,172.00
	2500 x 100 x 16	22.0	776.574 ^{1,2}	945.00	776.595 ^{1,2}	1,843.00
	3000 x 120 x 18	36.0	776.575 ^{1,2}	1,418.00	776.596 ^{1,2}	3,240.00
DIN 874/1	500 x 40 x 8	1.3	776.576	42.00	776.597	76.00
	750 x 50 x 10	3.0	776.577	74.00	776.598	137.00
	1000 x 50 x 10	4.0	776.578	87.00	776.599	198.00
	1500 x 60 x 12	8.4	776.579	165.00	776.600	397.00
	2000 x 70 x 15	12.0	776.580 ^{1,2}	435.00	776.601 ^{1,2}	869.00
	2500 x 80 x 15	17.0	776.581 ^{1,2}	614.00	776.602 ^{1,2}	1,143.00
	3000 x 100 x 16	26.0	776.582 ^{1,2}	926.00	776.603 ^{1,2}	2,030.00
DIN 874/2	500 x 30 x 6	0.7	776.583	26.50	776.604	53.00
	750 x 40 x 8	2.0	776.584	49.00	776.605	104.00
	1000 x 40 x 8	2.5	776.585	59.00	776.606	136.00
	1500 x 50 x 10	5.8	776.586	112.00	776.607	255.00
	2000 x 60 x 12	11.2	776.587 ²	170.00	776.608 ²	482.00
	2500 x 70 x 15	20.6	776.588 ²	331.00	776.609 ²	888.00
	3000 x 80 x 15	28.2	776.589 ²	520.00	776.610 ²	1,266.00

¹ I-shaped with two grip slots.

² Delivery ex Groningen, Netherlands.

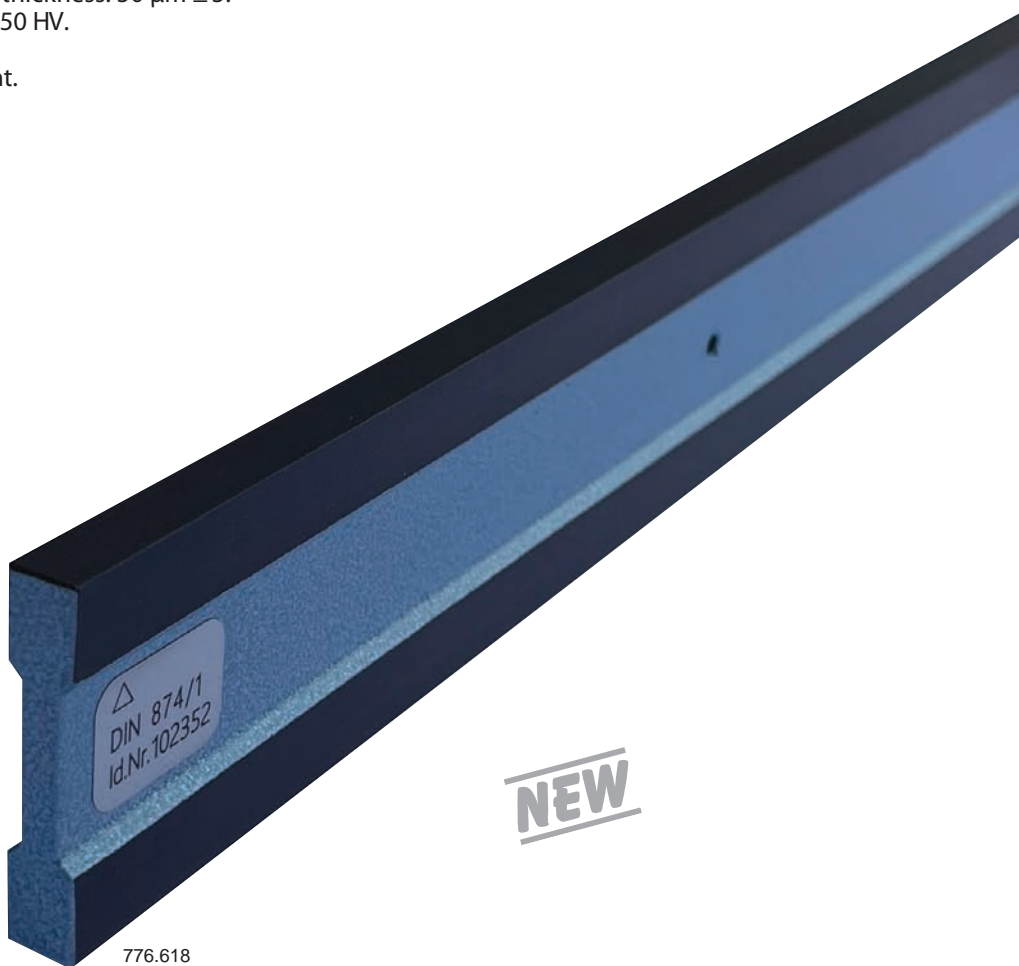


NEW

Aluminum straight edges

Light and therefore easy-to-use straight edges. Especially when using longer straight edges this is undoubtedly of great significance. High quality wooden cases for straight edges are optionally available.

- Length: 500 - 3000 mm.
 - I-shaped, from length 2000 mm with two grip slots.
 - With protective coating, thickness: 50 µm ± 5.
 - Surface hardness: 500 - 550 HV.
 - Highly wear resistant.
 - Highly corrosion resistant.
 - Highly insulating.
- Accuracy according DIN 874.
 - Delivery with an inspection report.



NEW

Item No.	Dimensions mm	Weight kg	Price EUR
DIN 874/0:			
776.611	500 x 60 x 12	0.7	321.00
776.612	1000 x 60 x 12	1.4	605.00
776.613	1500 x 100 x 15	4.3	1,021.00
776.614 ^{1,2}	2000 x 100 x 15	5.9	1,342.00
776.615 ^{1,2}	2500 x 100 x 15	7.5	1,559.00
776.616 ^{1,2}	3000 x 150 x 20	15.9	2,840.00

Item No.	Dimensions mm	Weight kg	Price EUR
DIN 874/1:			
776.617	500 x 60 x 12	0.7	227.00
776.618	1000 x 60 x 12	1.4	510.00
776.619	1500 x 100 x 15	4.3	813.00
776.620 ^{1,2}	2000 x 100 x 15	5.9	1,106.00
776.621 ^{1,2}	2500 x 100 x 15	7.5	1,370.00
776.622 ^{1,2}	3000 x 150 x 20	15.9	2,320.00
DIN 874/2:			
776.623	500 x 60 x 12	0.7	208.00
776.624	1000 x 60 x 12	1.4	454.00
776.625	1500 x 60 x 12	2.1	671.00
776.626 ^{1,2}	2000 x 60 x 12	2.8	898.00
776.627 ^{1,2}	2500 x 100 x 15	7.5	1,247.00
776.628 ^{1,2}	3000 x 100 x 15	8.7	1,625.00

¹ With two grip slots.

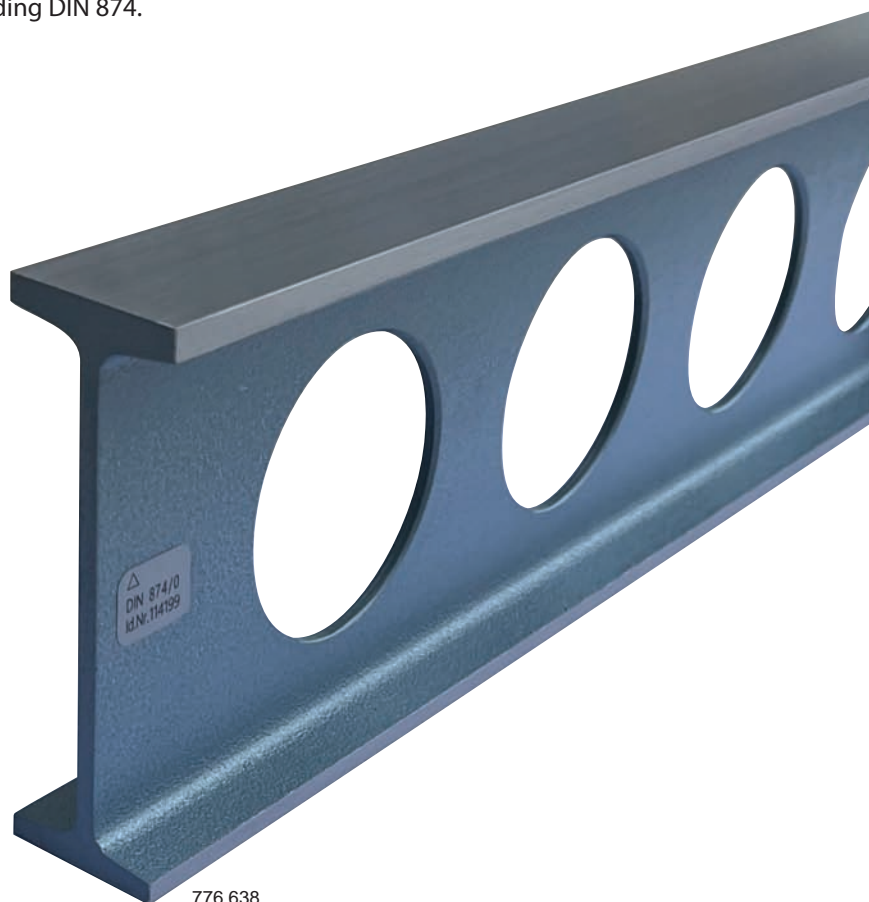
² Delivery ex Groningen, Netherlands.

NEW

Steel straight edges for mounting

I-shaped construction with wide and extra wide measuring faces for application of spirit levels.

- Length: 500 - 4000 mm.
- Flatness of the measuring faces according DIN 874.
- Delivery with an inspection report.

NEW

776.638

With wide measuring faces

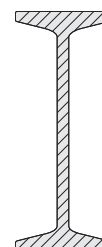
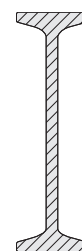
Dimensions/mm	Weight/kg	Item No.	Price EUR	Item No.	Price EUR
		DIN 874/0		DIN 874/1	
1000 x 100 x 30	5.0	776.631	539.00	776.645	473.00
1500 x 100 x 30	7.5	776.632	699.00	776.646	643.00
2000 x 120 x 40	15.0	776.633 ¹	907.00	776.647 ¹	869.00
2500 x 120 x 40	19.0	776.634 ¹	1,247.00	776.648 ¹	1,181.00
3000 x 140 x 40	26.0	776.635 ¹	1,578.00	776.649 ¹	1,493.00

¹ Delivery ex Groningen, Netherlands.

With extra wide measuring faces

Dimensions/mm	Weight/kg	Item No.	Price EUR	Item No.	Price EUR
		DIN 874/0		DIN 874/1	
500 x 80 x 40	2.0	776.636	435.00	776.650	369.00
750 x 80 x 40	3.5	776.637	491.00	776.651	416.00
1000 x 160 x 50	12.0	776.638	718.00	776.652	605.00
1500 x 160 x 50	18.0	776.639	992.00	776.653	832.00
2000 x 160 x 50	24.0	776.640 ¹	1,276.00	776.654 ¹	1,077.00
2500 x 160 x 50	30.0	776.641 ¹	1,748.00	776.655 ¹	1,370.00
3000 x 180 x 60	45.5	776.642 ¹	2,690.00	776.656 ¹	2,270.00

¹ Delivery ex Groningen, Netherlands.





NEW

Laser alignment tool

With this alignment tool you can precisely, quickly and easily project vertical, horizontal and crossed laserlines. Within a range of $\pm 4^\circ$ minor inclination errors are automatically compensated by means of the integrated spirit level, to level the projected horizontal line.

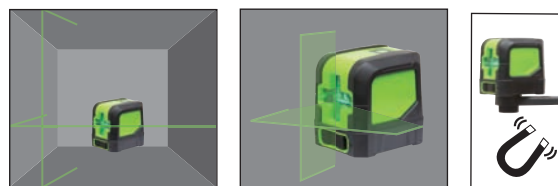
- Range: up to 30 m (dependent on the lighting conditions).
 - Self-levelling range: 4° .
 - Horizontal and vertical accuracy: ± 4.5 mm / 15 m.
 - Laser: 510 - 530 nm, class 2 conform to IEC 60825-1/2007.
 - Lock function for projecting at an angle and transport protection.
 - On/off switch.
 - Dimensions: 74x64x75 mm.
 - Weight: 270 g.
 - Protection: IP54.
- Intake internal thread on the bottom-side: UNC 1/4"-20, thread depth: 8 mm.
 - Delivery in a soft case including a plastic mounting bracket with 2 strong magnets.
 - Power supply: 2 batteries type AA.

NEW



Filetta

Item No.	Description	Price EUR
910.369	Alignment tool	68.00
Option:		
495.111	Spare battery (2 needed)	0.70



Wooden cases for gauge block sets

Wooden cases with cutouts and size indications for



910.361

NEW

Item No.	Price EUR	Size mm	Increment mm	Pieces
M32: 910.361	33.40	1.005	–	1
		1.01 - 1.09	0.01	9
		1.1 - 1.9	0.1	9
		1 - 9	1	9
		10 - 30	10	3
		50	–	1
M47: 910.362	33.40	1.005	–	1
		1.01 - 1.09	0.01	9
		1.1 - 1.9	0.1	9
		1 - 24	1	24
		25 - 100	25	4
M87: 910.363	46.00	1.001 - 1.009	0.001	9
		1.01 - 1.49	0.01	49
		0.5 - 9.5	0.5	19
		10 - 100	10	10
M88: 910.364	46.00	1.0005	–	1
		1.001 - 1.009	0.001	9
		1.01 - 1.49	0.01	49
		0.5 - 9.5	0.5	19
		10 - 100	10	10
M103: 910.365	52.00	1.005	–	1
		1.01 - 1.49	0.01	49
		0.5 - 24.5	0.5	49
		25 - 100	25	4
M112: 910.366	52.00	1.0005	–	1
		1.001 - 1.009	0.001	9
		1.01 - 1.49	0.01	49
		0.5 - 24.5	0.5	49
		25 - 100	25	4

NEW

Plug gauges G7

Manufactured according DIN 7162. Available from 1 to 20 mm; with Go and NoGo on one handle.

- DIN 7162.
- G7 fit size in hardened steel.
- Available from 1 to 20 mm; with Go and NoGo on one handle.
- With serial number.
- Delivery in a plastic tube with a manufacturer measuring report.
- Including wear allowance at the Go end.

Wear allowance

New gauges are supplemented with a wear allowance on the Go end: z (plus) for plug gauges. Accordingly, the size indicated on the handle is not similar to the measured value of the new Go end.



Item No.	Size G7 mm	Price EUR
911.158	1	39.90
911.159	1.5	35.80
911.160	2	20.50
911.161	2.5	19.00
911.162	3	19.00
911.163	3.5	19.00
911.164	4	19.00
911.165	4.5	19.00
911.166	5	19.00
911.167	5.5	19.00
911.168	6	15.30
911.169	7	17.20
911.170	8	17.20
911.171	9	17.20
911.172	10	17.20
911.173	11	18.40
911.174	12	18.40
911.175	13	18.40
911.176	14	18.40
911.177	15	20.10
911.178	16	21.10
911.179	17	21.10
911.180	18	21.10
911.181	19	23.20
911.182	20	25.60

NEW

Filetta

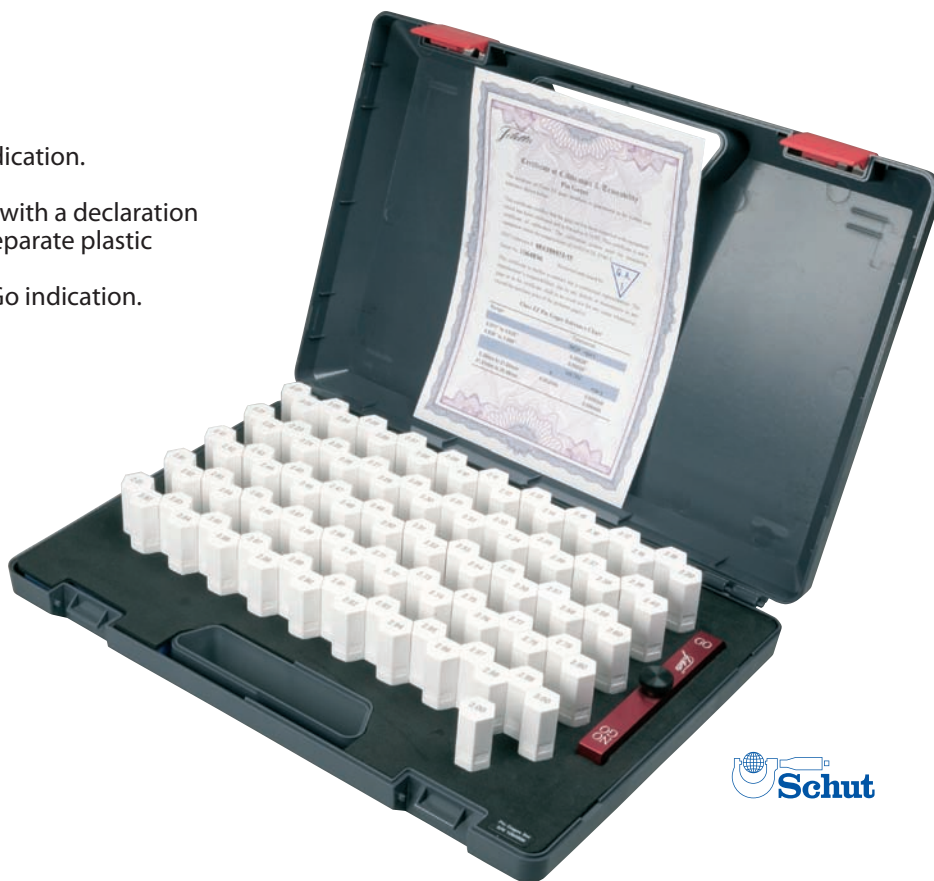


NEW

Pin gauges in sets

Hardened steel pin gauges in sets with favourable price-performance ratio, very well suited for workshop use. Delivery in plastic case with a declaration of conformity and holder for Go/NoGo determination.

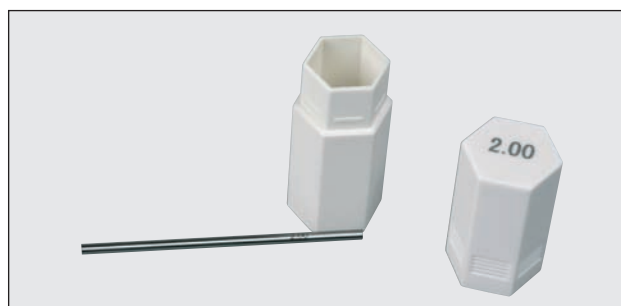
- Hardened steel.
- Diameter range: 0.20 - 20.00 mm.
- Increment: 0.1 mm.
- Accuracy: ± 0.003 mm.
- Without handle.
- Pin gauges $> \varnothing 1.5$ mm with size indication.
- Length: 50 mm.
- Delivered in a plastic carrying case with a declaration of conformity with pin gauges in separate plastic tubes with size indication.
- Delivered with holder with Go/NoGo indication.



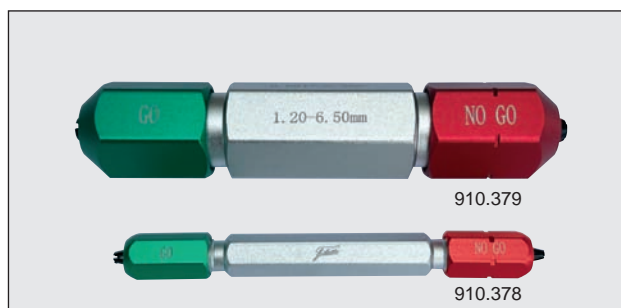
Filetta



NEW



Item No.	Diameter mm	Increment mm	Number per set	Price EUR
910.367	0.20 - 10.00	0.1	99	163.00
910.368	10.00 - 20.00	0.1	101	303.00
Holders for Go/NoGo determination:				
910.378	0.30 - 1.50			16.80
910.379	1.20 - 6.50			20.80
910.380	5.00 - 14.00			25.80
910.381	12.00 - 16.50			30.90
910.382	14.00 - 19.50			36.50
910.383	18.00 - 22.00			41.00



NEW

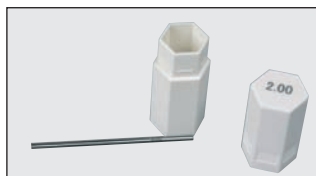
Pin gauges in tool trolley

Hardened steel pin gauges in a set with favourable price-performance ratio, very well suited for workshop use. Delivery in tool trolley with a declaration of conformity and holder for Go/NoGo determination.

- Hardened steel.
 - Diameter range: 0.50 - 12.00 mm.
 - Increment: 0.01 mm.
 - Accuracy: ± 0.003 mm.
 - Without handle.
 - Pin gauges $> \varnothing 1.5$ mm with size indication.
 - Length: 50 mm.
 - Dimensions tool trolley: 670 x 350 x 540 mm.
 - Total weight: 63 kg.
- Delivery in a tool trolley with a declaration of conformity with pin gauges in separate plastic tubes with size indication.
 - Delivery with three holders with Go/NoGo indication (910.378, 910.379 and 910.380).

Filetta

NEW




Delivery ex Groningen, Netherlands

Item No.	Description	Price EUR
910.460	Set with 1151 pin gauges and 3 holders	2,120.00



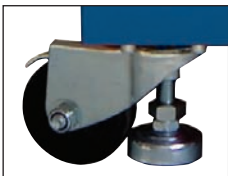


NEW

Tool trolley

- Dimensions tool trolley: 670x350x540 mm.

NEW



Delivery ex Groningen, Netherlands



Item No.	Description	Price EUR
910.461	Tool trolley	449.00

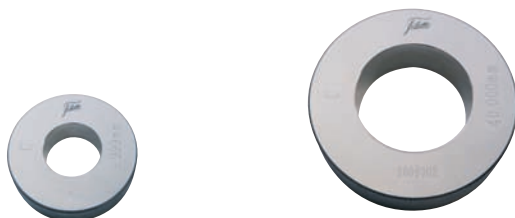
NEW

Setting rings

Manufactured according DIN 2250 form C. Available from 3 to 200 mm.

- DIN 2250 form C.
- Material: hardened steel.
- The size is indicated on the setting rings to three decimal places.
- With serial number.
- Delivery with a manufacturer measuring report.
- Individual setting rings from 3 - 32 mm:
delivery in a plastic case,
individual setting rings from 33 - 200 mm:
delivery in a cardboard case.

Filetta



Item No.	Size mm	Price EUR	Item No.	Size mm	Price EUR	Item No.	Size mm	Price EUR
911.070	3	29.60	911.099	33	39.80	911.131	88	110.00
911.071	4	29.60	911.100	34	39.80	911.132	90	110.00
911.072	5	29.60	911.101	35	39.80	911.133	92	110.00
911.073	6	26.40	911.102	36	42.00	911.134	95	118.00
911.074	7	26.40	911.103	37	42.00	911.135	98	136.00
911.075	8	26.40	911.104	38	42.00	911.136	100	136.00
911.076	9	26.40	911.105	40	42.00	911.137	105	154.00
911.077	10	26.40	911.106	42	48.00	911.138	110	161.00
911.079	11	28.70	911.107	44	48.00	911.139	115	174.00
911.080	12	28.70	911.108	45	48.00	911.140	120	192.00
911.081	13	28.70	911.109	46	57.00	911.141	125	207.00
911.082	14	28.70	911.110	47	57.00	911.142	130	217.00
911.083	15	28.70	911.114	48	57.00	911.143	135	232.00
911.084	16	31.00	911.115	50	57.00	911.144	140	255.00
911.085	17	31.00	911.116	52	64.00	911.145	145	278.00
911.086	18	31.00	911.117	55	64.00	911.146	150	283.00
911.087	19	31.00	911.118	58	71.00	911.147	155	306.00
911.088	20	31.00	911.120	60	71.00	911.148	160	323.00
911.089	21	35.20	911.121	62	70.00	911.149	165	356.00
911.090	22	35.20	911.122	65	70.00	911.150	170	382.00
911.091	23	35.20	911.123	68	78.00	911.151	175	407.00
911.092	24	35.20	911.124	70	78.00	911.152	180	458.00
911.093	25	35.20	911.125	72	84.00	911.153	185	506.00
911.094	26	35.20	911.126	75	84.00	911.154	190	546.00
911.095	27	35.20	911.127	78	84.00	911.155	195	597.00
911.096	28	35.20	911.128	80	84.00	911.156	200	632.00
911.097	30	35.20	911.129	82	101.00			
911.098	32	39.80	911.130	85	101.00			



NEW

Twist drill grinding gauges

For checking twist drills at their top and on the right value of 120° angle of the twist drill point. The maximum drill diameter is 50 mm.

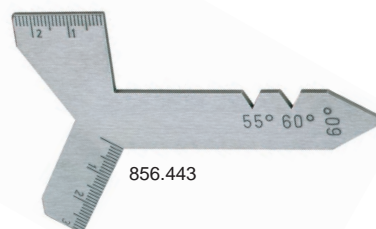
Universal twist drill grinding gauge, also called *Y-gauge*. Besides the standard angle of 120°, this gauge also has a 90° angle for countersink drills, and some special angles for center drills.

NEW



910.372

Filetta



856.443

Item No.	Description	Price EUR
910.372	Twist drill grinding gauge	3.10
856.443	<i>Y-gauge</i>	11.30

Digital measuring wedge

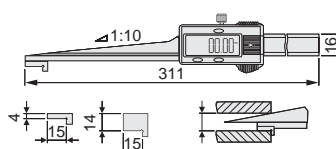
Digital measuring wedge for measurements and checks of slits, key-ways, distances, etc.

- Measuring range: 0.2 - 30 mm.
- Resolution: 0.01 mm.
- mm/inch conversion.
- On/off switch.
- Reset.
- Large LCD display.
- Locking screw.
- Power supply: 1 battery type V357.



NEW

Item No.	Measuring range/mm	Accuracy mm	Price EUR
910.283	0.2 - 30	±0.02	263.00
Option: 836.535	Spare battery type V357		0.80



Filetta

Chamfer calipers

- Measuring range: 0 - 8 mm.
- Resolution: 0.01 mm.
- Accuracy: ±0.03 mm.
- mm/inch conversion.
- On/off switch.
- Reset.
- Locking screw.
- Delivery in a case.
- Power supply: 1 battery type V357.

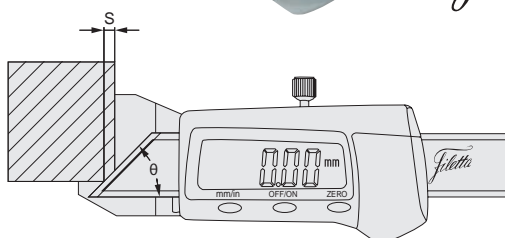
NEW



910.265

Filetta

Item No.	Angle	Price EUR
910.265	30°	102.00
910.266	45°	122.00
910.267	60°	170.00
Option: 836.535	Spare battery type V357	0.80



NEW

Stand microscopes 20x ... 100x

These stand microscopes are available in four versions. All four are compact and lightweight, but are especially characterized by their large field of view. Delivered in a case, including LED penlight, matching standard scale and objective. The microscopes come with a Huygens eyepiece (magnification 10x) and with a detachable soft rubber eye adapter. All-purpose use with high precision.

A scale graduation (with a 10 mm scale range) has been engraved on the focusing ring which allows height measurements at a resolution of 0.1 mm.

- Focusing with helicoil ring.
- Eyepiece: 10x.
- Dimensions: $\varnothing 41.5 \times 122$ mm.
- Weight (without batteries): 262 - 264 g.
- Power supply: 1 battery type AAA.

NEW



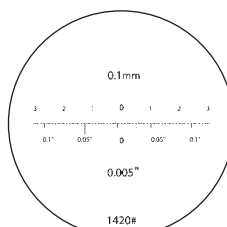
910.411



910.422



910.418



910.414

Item No.	Magnification microscope	Price EUR
Standard scales:		
910.414	20x	13.60
910.415	40x	13.60
910.416	60x	13.60
910.417	100x	13.60
910.422	Individual eyepiece 10x	36.00
Objectives:		
910.418	Individual objective 2x	75.00
910.419	Individual objective 4x	78.00
910.420	Individual objective 6x	80.00
910.421	Individual objective 10x	82.00

Item No.	Magnification	Objective	Field of view \varnothing /mm	Working distance/mm	Measuring range/mm	Graduation mm	Price EUR
910.409	20x	2x	7.2	20	6	0.1	113.00
910.410	40x	4x	3.6	21	3	0.05	120.00
910.411	60x	6x	2.4	13.5	2	0.02	125.00
910.412	100x	10x	1.45	7	1	0.01	131.00
Options:							
497.914	Spare battery type AAA						0.80
910.413	LED penlight						13.10



NEW

Stand microscopes 20x ... 100x with LED illumination

These stand microscopes are available in four versions. All four are compact and lightweight, but are especially characterized by their large field of view. Delivered in a case, including LED ring light, matching standard scale and objective. The microscopes come with a Huygens eyepiece (magnification 10x) and with a detachable soft rubber eye adapter. All-purpose use with high precision.

A scale graduation (with a 10 mm scale range) has been engraved on the focusing ring which allows height measurements at a resolution of 0.1 mm.

- Focusing with helicoid ring.
- Eyepiece: 10x.
- Illumination: 3 LEDs.
- Dimensions: $\varnothing 41.5 \times 122$ mm.
- Weight (without batteries): 285 g.
- Power supply: 4 batteries type V394.

NEW



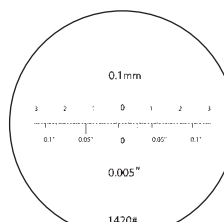
910.404



910.422



910.404



910.414



910.418



Item No.	Magnification microscope	Price EUR
Standard scales:		
910.414	20x	13.60
910.415	40x	13.60
910.416	60x	13.60
910.417	100x	13.60
910.422	Individual eyepiece 10x	36.00
Objectives:		
910.418	Individual objective 2x	75.00
910.419	Individual objective 4x	78.00
910.420	Individual objective 6x	80.00
910.421	Individual objective 10x	82.00



Item No.	Magnification	Objective	Field of view \varnothing /mm	Working distance/mm	Measuring range/mm	Graduation mm	Price EUR
910.404	20x	2x	3.3	17	3.0	0.1	122.00
910.405	40x	4x	2.0	11.7	1.6	0.05	127.00
910.406	60x	6x	1.1	11.7	1.0	0.02	136.00
910.407	100x	10x	0.84	11.6	0.8	0.01	143.00
Options:							
420.248	Spare battery type V394 (4 needed)						1.50
910.408	LED ring light						46.00

NEW

Circumference tapes

- Separate graduations for circumference and diameter in mm.
- Vernier: 0.1 mm.
- Tape width: 13 mm.

- Stainless steel with yellow plastic coating for easy reading.
- Accuracy according EC class II.



841.468

NEW



841.663



Stainless steel with yellow plastic coating

Item No.	Diameter mm	Circumference mm	Price EUR
841.468	20- 300	60- 950	70.00
841.469	20- 1200	60- 3780	95.00
841.470	20- 2400	60- 7540	121.00
841.471	20- 3600	60- 11310	203.00

Stainless steel

Item No.	Diameter mm	Circumference mm	Price EUR
841.663	20- 300	60- 950	58.00
841.664	20- 1200	60- 3780	86.00
841.665	20- 2400	60- 7540	109.00
841.666	20- 3600	60- 11310	192.00

Precision tape for circumference and diameter

Precision tape for measuring of circumference and diameters.

- Separate graduations for circumference and diameter in mm.
- Graduation: 1 mm.
- Tape width: 12.5 mm.
- Lock.

- EC class II.
- White varnished very flexible steel strip with mm graduation.

NEW



Item No.	Diameter mm	Circumference mm	Price EUR
911.183	20-960	60-3000	5.60





NEW

Digital thermometers

- Measuring range: -50 to 500°C (in combination with the NR-160 probe).
- Resolution: 909.145: 1°C, 910.434: -50°C to 199.9°C: 0.1°C; 200°C+: 1°C.
- Accuracy (H = measured value):
909.145:
-50 to -20°C: ±4°C,
-20 to 0°C: ±3°C,
0 to 500°C: ±(1 + 0.0075 H)°C
910.434:
-50 to 199.9°C: ±(0.3% H + 1°C),
200 to 500 °C: ±(0.3% H + 2°C).
- °C/°F conversion (only 910.434).
- On/off switch.
- Hold function.
- Cable length standard TP01 probe: 1 m.
- Delivery incl. TP01 probe (909.076).
- Weight (incl. battery): 909.145: approx. 150 g, 910.434: approx. 190 g.
- Power supply: 1 battery type PP3 (9 V).



909.145



910.434

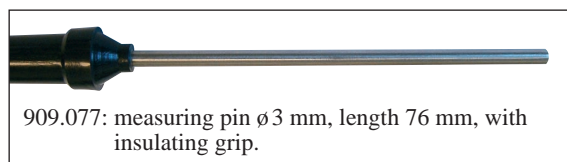
NEW



910.432



910.433



Item No.	Measuring range/°C	Price EUR
909.145	-50 to 500	35.60
910.434	-50 to 500	57.00
Option:		
495.161	Spare battery type PP3 (9 V)	2.50

Item No.	Type	Measuring range/°C	Applications	Material probe	Price EUR
909.076	TP01	-50 to 200	air	steel	6.60
909.077	TP02	-50 to 400	air, steam, liquids, gels	stainless steel	7.40
910.432	TP04	-50 to 400	surfaces (curved model)	steel	33.30
910.433	NR-160	-50 to 500	surfaces (straight model)	steel	33.30

The listed prices are excl. VAT.

The terms of sales and delivery as mentioned in the catalog Measuring instruments and systems 2023/2024 apply.